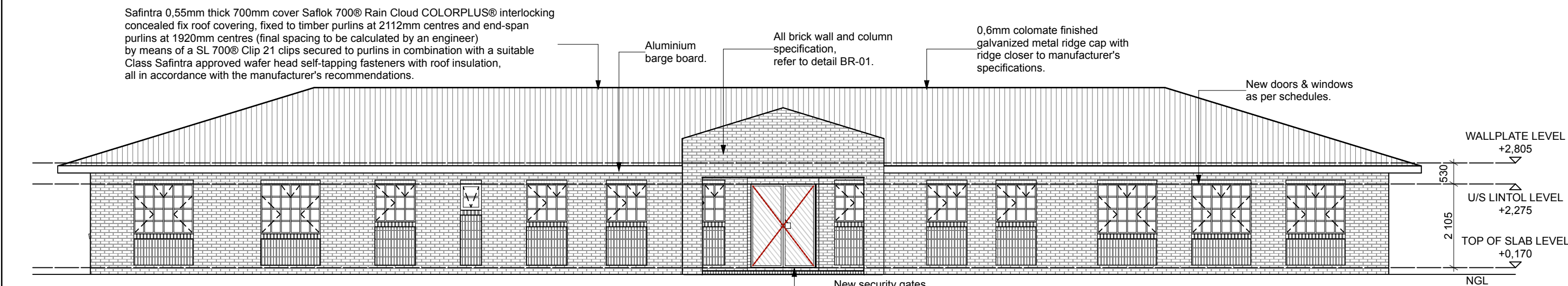
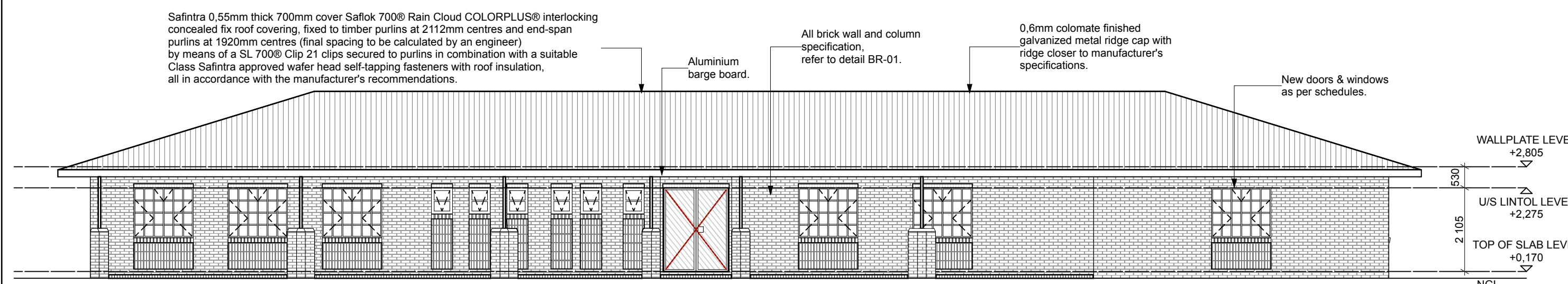


GROUND FLOOR PLAN
SCALE - 1:100

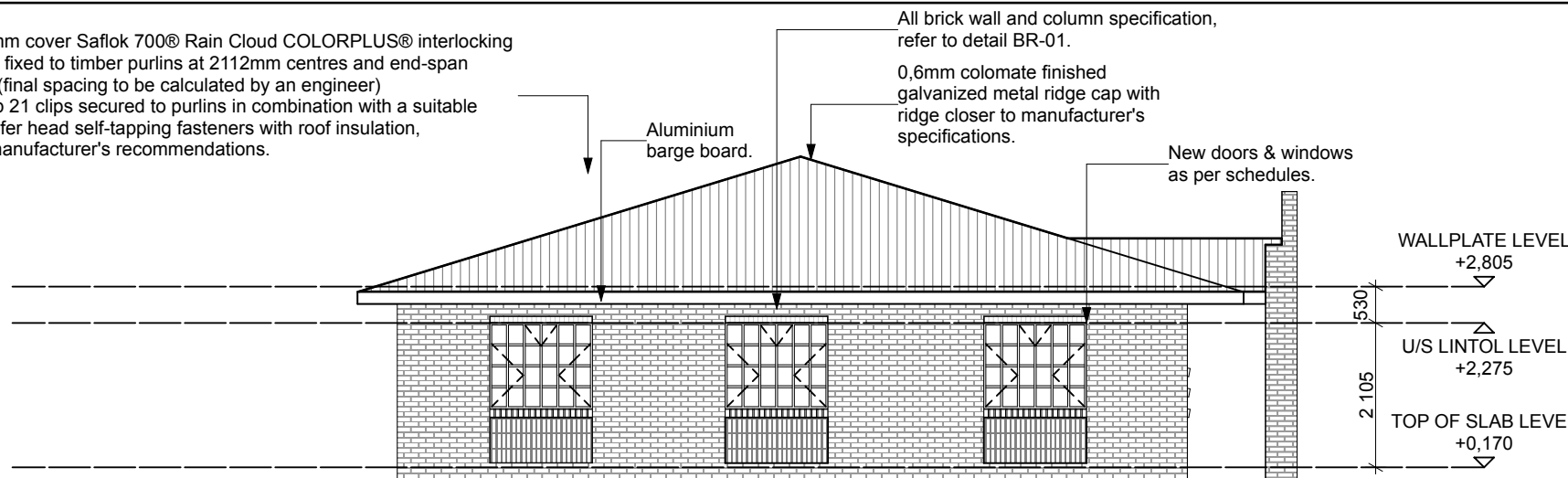


FRONT ELEVATION
SCALE - 1:100

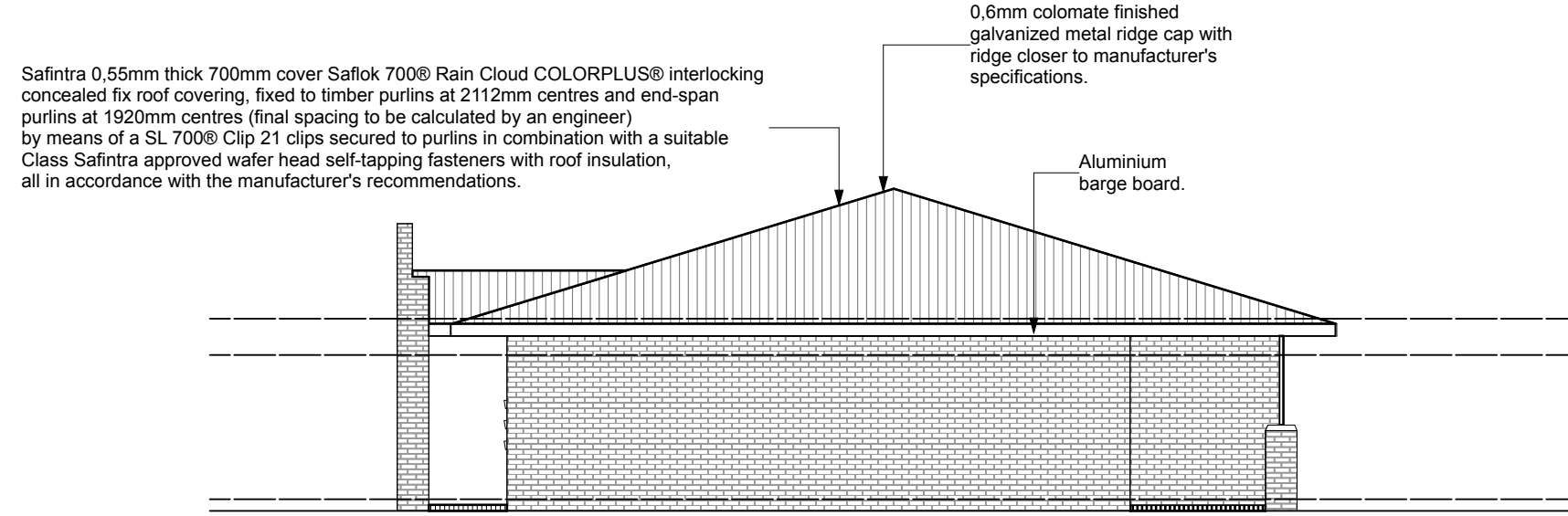


REAR ELEVATION
SCALE - 1:100

Safintra 0.55mm thick 700mm cover Saflok 700® Rain Cloud COLORPLUS® interlocking concealed fix roof covering, fixed to timber purlins at 2112mm centres and end-span purlins at 1920mm centres (final spacing to be calculated by an engineer) by means of a SL 700® Clip 21 clips secured to purlins in combination with a suitable Class Safintra approved wafer head self-tapping fasteners with roof insulation, all in accordance with the manufacturer's recommendations.

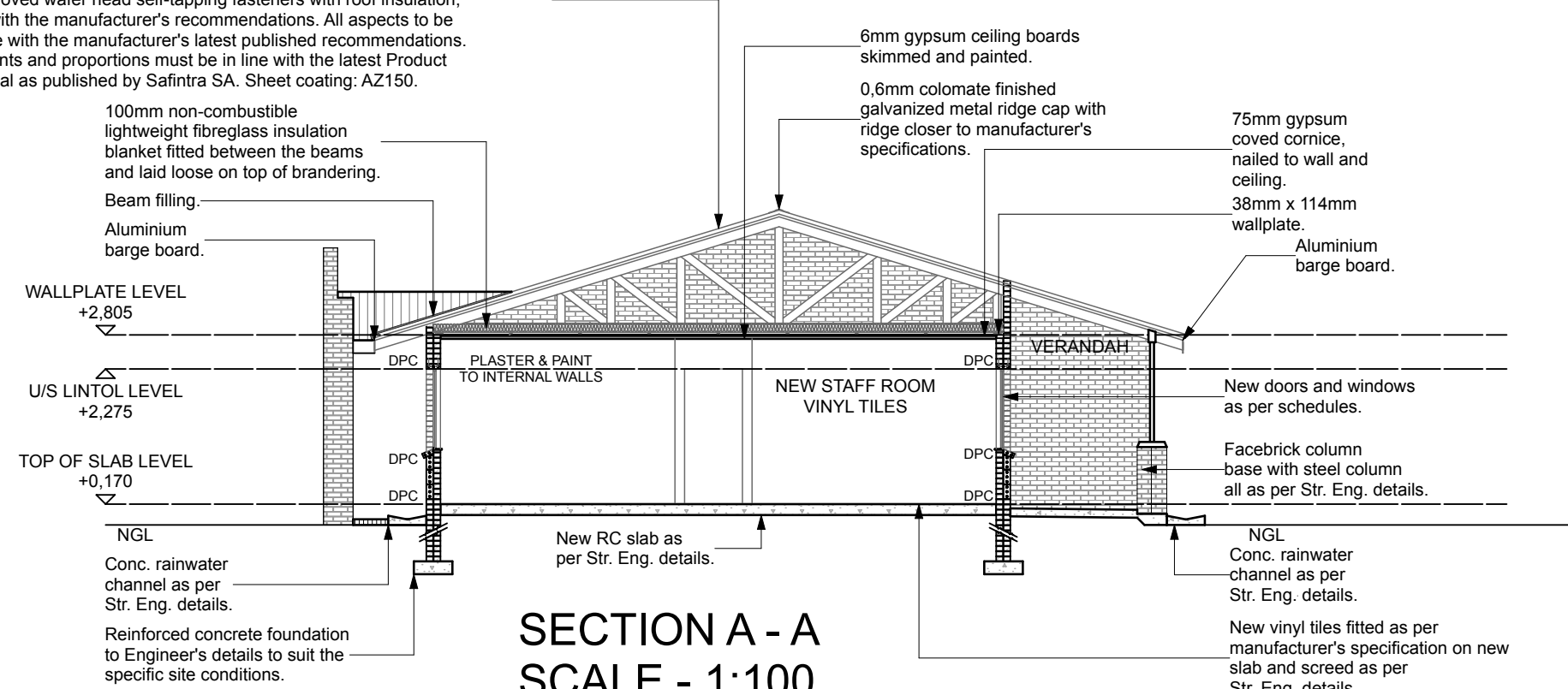


SIDE ELEVATION
SCALE - 1:100

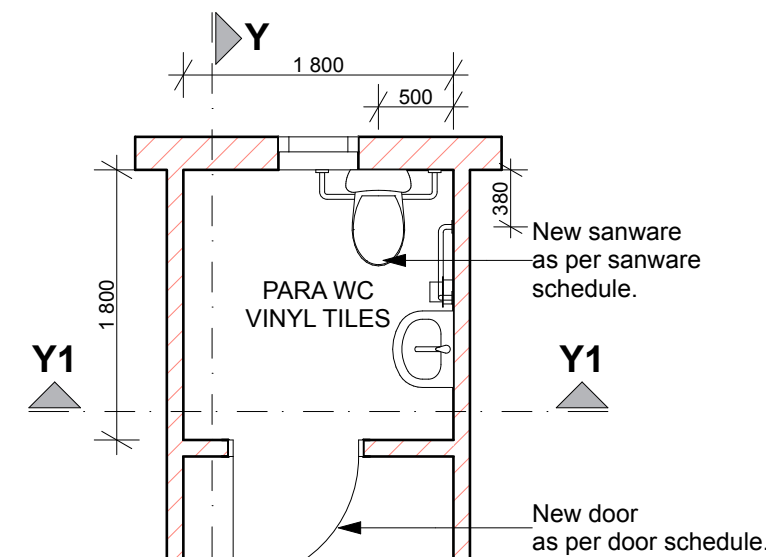


SIDE ELEVATION
SCALE - 1:100

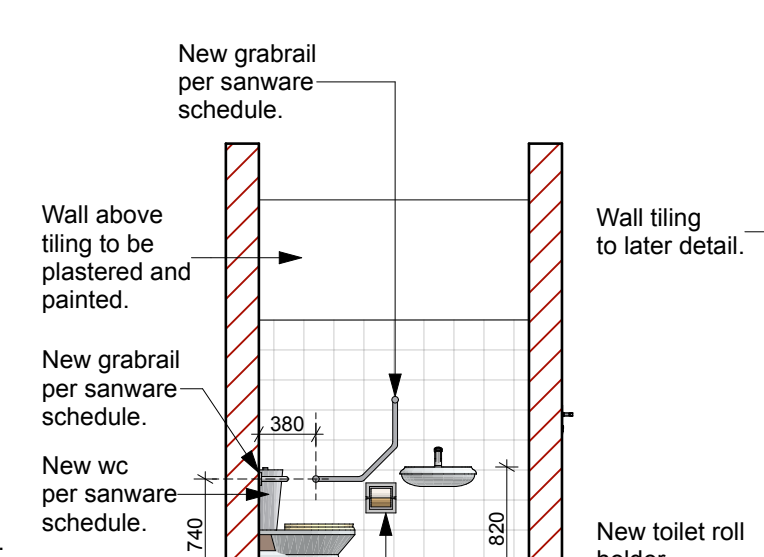
Safintra 0.55mm thick 700mm cover Saflok 700® Rain Cloud COLORPLUS® interlocking concealed fix roof covering, fixed to timber purlins at 2112mm centres and end-span purlins at 1920mm centres (final spacing to be calculated by an engineer) by means of a SL 700® Clip 21 clips secured to purlins in combination with a suitable Class Safintra approved wafer head self-tapping fasteners with roof insulation, all in accordance with the manufacturer's recommendations. All aspects to be in strict accordance with the manufacturer's latest published recommendations. Profile measurements and proportions must be in line with the latest Product Specification Manual as published by Safintra SA. Sheet coating: AZ150.



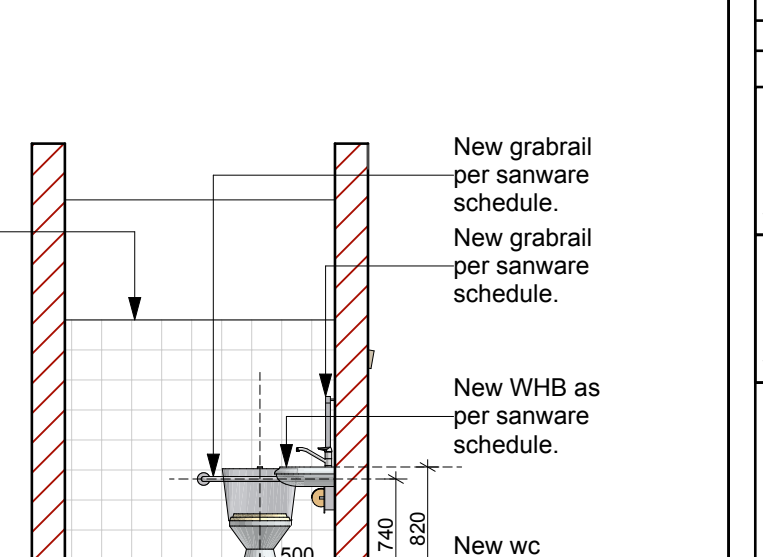
SECTION A - A
SCALE - 1:100



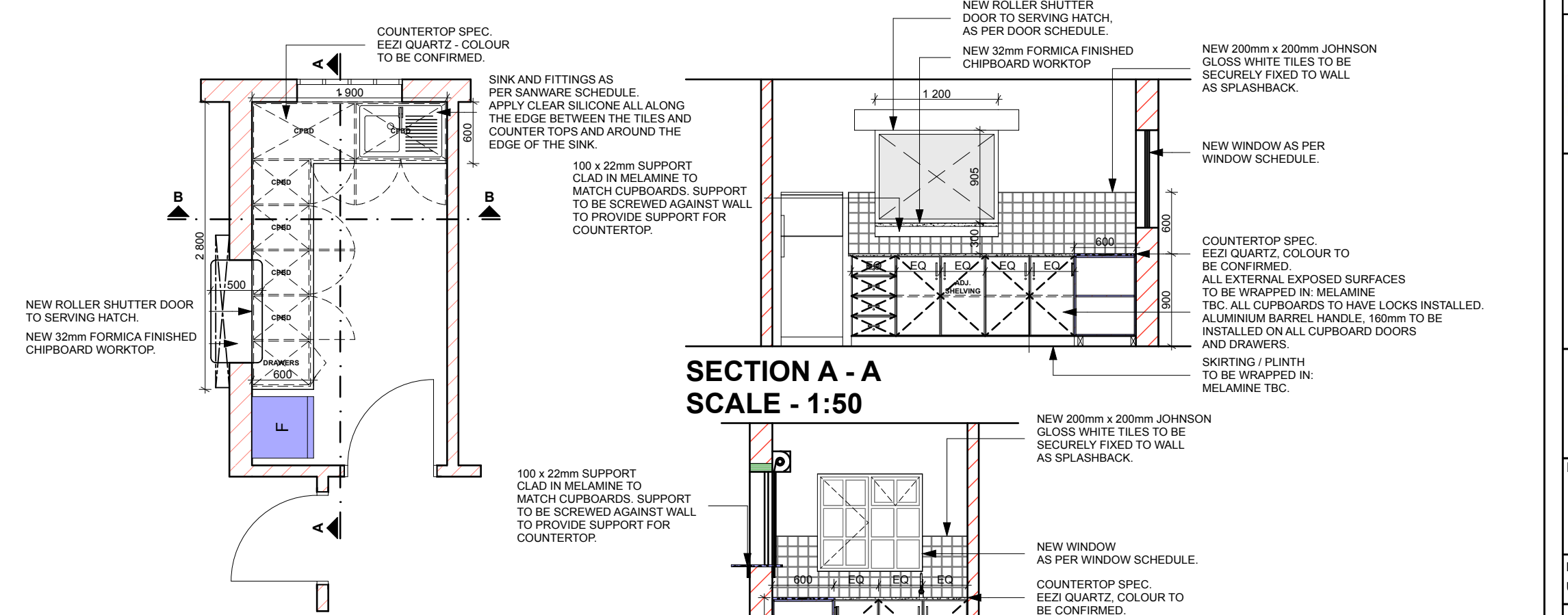
PARA WC PLAN
SCALE - 1:50



SECTION Y - Y
SCALE - 1:50



SECTION Y1 - Y1
SCALE - 1:50



KITCHEN FLOOR PLAN
SCALE - 1:50

SECTION A - A
SCALE - 1:50

SECTION B - B
SCALE - 1:50

SANITARY FITTINGS

STANDARD WC

WC SUITE: White 90 vitreous china pan and P-trap with white heavy duty single plastic flap seat. 9 litre low level white vitreous china cistern. with valve fitting and matching flush pipe. (Flush Master System to be utilised if area water pressure allows).

TAPS

"COBRA WATERTECH" pillar tap no.111with star chromium plated handle, colour markings (hot/left & cold/right). recommended working pressure is 400kpa (4 bar) accessories to manufacturer specification.

PARAPLEGIC WC

Back inlet 90° wall hung open rim pan. Pan can be used with a concealed cistern or with a suitable back inlet flush valve.

MIRROR

450 x 600 x 6mm "GG" quality polished glass mirror: fix to wall position as shown on site with round nose chromium plated mirror screws. 1 mirror per basin. 4 screws per mirror.

WALL URINAL

White vitreous china wall urinal: 610 x 385 washdown wall urinal with wall hangers, strainer waste, top inlet spreader and chrome plated flush pipes. 4.5L cistern with back inlet and PC push button. All as approved.

ROLL HOLDER

Franke TR2 stainless steel wall mounted lockable double toilet roll holder. Size: 281 x 126 x 136 mm

WHITE GLAZED PORCELAIN WHB

WHITE PORCELAIN ENAMELLED BASIN with one tap hole punched out 31 mm chromium plated outlet, with plug, chain, anchor & 32mm back nut complete. Provide one chromium plated pillar tap except in Admin Block & Grade R's Sick room - provide two taps (hot and cold). Provide black soft rubber P trap. Disabled WHB fixed to wall as per SANS 10400.

PARAPLEGIC WC GRABRAILS

Railman Grabrails: Ref DL2 dogleg grabrail with 2 flanges. 304 high quality stainless steel 32mm o/d, finish satin polished. 80mm o/d flanges drilled and countersunk with 3 fixed screws.
Railman Grabrails: Ref SR2 750mm x 206mm straight grabrail position as per detailed drawing. 304 high quality stainless steel 32mm o/d, finish satin polished. 80mm o/d flanges drilled and countersunk with 3 fixed screws.

NOTES:
1. All boundaries, dimensions and levels are to be checked on site before construction and any discrepancies are to be reported to the office of the Architect.
2. Partial Service: Any discrepancies with site or other information is to be advised to the Architect and direction or approval is to be sought before the implementation of the detail.
3. Do not scale this drawing.
4. For the purpose of coordination, all relevant parties must check this information prior to implementation and report any discrepancies to the Architect.

Rev No:	Date:	Description:	Rev By:
A	17/08/22	For Information Purposes Only	MM
B	27/09/22	Roof design and brickwork design change	MM
C	10/10/22	A.B.E.T. Room removed from design	MM

Architect :

Name :

Signature :

Client :

Name :

Signature :



Project:
**CONDITION ASSESSMENT
WESTERN HOLDINGS PRIMARY SCHOOL**

Drawing description:
**PROPOSED NEW
ADMINISTRATION BUILDING: PLANS,
SECTIONS, ELEVATIONS & DETAILS**

Drawn:
URBAN PLATFORM ARCHITECTS + PLANNERS

Scale/s: AS SHOWN ON DRAWING

FOR INFORMATION

Drawing Number:
082-WHPS-203

Revision:
C